

Influenced by a civic canopy, Stephen C. Paddock's antisocial personality disorder (ASPD) defended the violent non-state actor (VNSA) lifestyle. By Ronald Alexander Ph.D.

Abstract: Stephen C. Paddock's fixation on preventing his intellectual and economic decline, collapsed following his abandonment of any meaningful social interactions, expressed a hidden reaction formation while generating a high incidence for violence. Insult development occurred during his adolescent, phallic stage. His experiences and choices, throughout the Oedipus complex, produced a distorted understanding, as when one parent received incarceration and the other struggled to provide for four younger males. He persisted in replacement feelings toward the female parent, whose experiences contributed to his maturation and to his persona, living without commitment, whether artificial or normal. In defending the absent father, insult development forced unconscious drives, hardening his ambivalence, deepening his secretive passion to harm. He determined his anxiety by following abstract motifs, often, unconsciously nurtured and influenced, by a civic canopy. Projecting unresolved issues onto others, he employed tangible, violent force. Biological and social influences challenged his affect. Paddock activated a series of complex, historic and current, non-state influencers who share a ghost-persona, learned over an extended phase, prior to final aggression.

Vocabulary: civic canopy; iteration; bump fire stock; insult development (ID); phallic stage; neurocognitive disorder; IALE; POAEMA, POEAMI; Saracen; Roscoe Trailer Park; paddle

Remembrance: For my brother, James I. Alexander, a retired police officer who conveyed his leadership and brotherhood with the New York City Police Department; and, a Professor of Criminology who taught in several colleges and universities, especially along the eastern seaboard.

Dedication: I dedicate this journal to Tommy Uyeda, a Japanese American who, with his family, had to leave his home in California to live in a war relocation center and in the Roscoe Trailer Park, Sun Valley, California.

Table of Contents

Civic Canopy

Descriptive Elements -

Health attributes

Synthesis iteration

Specific exposure and focus

Structural factors

Part 1 - Findings, Evaluations

Part 2 - Prevention, Mitigation and Recovery

Epilogue

Outline of civic canopy elements

Part 3 - Given, Adaptation, Narratives, Residence

Part 4 - Leaders and Role Models, Relationships

Part 5 - Educational Services, Economic Background, Employment

Part 6 - Infra-structure, Transport

Part 7 - Recreation, Entertainment

Part 8 - Environment

Part 9 – Medical

Civic Canopy includes a surrounding schema (information) which foregrounds a population having interaction effects.

A dynamic civic canopy comprises a cognitive synthesis of several health attributes:

- genetics
- social circumstances
- exposure to various interacting influences
- behavioral patterns
- health care

Synthesis iteration transpires while adapting the expression of interchanges:

- physical materials - objects, images, designs, technology, weapons
- behaviors - activities, senses, socialization
- demographic and geographic markers - access, location, dimension
- movement - distance, destinations, versions, magnitude
- tragedies - accidents, addictions, crime, tectonics, Earth's climate, terrorism, war

Specific exposure and focus on errors in decision control, express an origin and pathways in the time required for perceptive adaptation. Resistance caused by stress, connective damage and injury, can interfere with acquisition and cognitive controls, plunging a response toward a significantly defective, co-morbid outcome.

Associated structural factors when formulating a civic canopy:

- Residence - individual's permanent and temporary address
- Leaders and role models - father figures
- Relationships - homo and hetero social relationships
- Educational Services - public schools and universities attended
- Economic Background - demographic diversity of locations where individual lived/invested
- Employment 1 - self-employed
- Employment 2 - reward management for services / labor performed
- Infra-structure - institutions, buildings, motorways, airports, historical markers
- Means of transport - mobility, including ground, air and sea travel
- Recreation, Entertainment - open areas easily accessed by SCP
- Environment 1 - national - confrontations ending in a single or mass casualty incident
- Environment 2 - international - confrontations ending in a single or mass casualty incident
- Environment 3 - geological events ending in a single or mass casualty incident
- Medical - individual's treatment plan, prescriptive medications, hygiene, observations

Part 1 - Findings, Methodology, Evaluations

I. Findings - individual's behaviors and emotional attachments

Stephen C. Paddock presented as a child who received essential caring, although erratic, directed to him and to his siblings. As a child, his father's choices caused negative influence, increasing his son's insult development (ID). The framework of SCP's growth potential, although he received guidance from his mother, grandparents and associate communities, he did not integrate new information that could modify his internal struggles.

Insult development had weakened SCP's lifestyle, forcing him to harbor unresolved trauma and to generate the "meticulous planning" required for his "insider threat" attack. His state of mind determined:

- his conceptualization of righting past societal inequities against a minority group,
- his desire to further his unknown political beliefs
- his ability to exert power onto others when using his collection of weapons
- his name "paddock" describes an arena used to keep horses and livestock
- his ability to influence events by attacking an audience in Las Vegas
- his ability to commit suicide thinking that no one could decipher his "account".

In particular, on 01OCT2017, SCP committed a terrorist attack, when firing weapons from an elevated position, in the Mandalay Bay Hotel and Casino (MBHC), upon an assembly of persons in Las Vegas, Nevada:

- he looked for enclosed target locations
- he surveilled the vulnerabilities of the MBHC and other establishments
- he infiltrated MBHC security system by doing ordinary tasks
- he used unwitting operatives who did not understand the purpose of his mission
- he used technical surveillance gear such as electronic audio/video cameras and lap-top computers
- he patronized the hotel as a VIP guests requesting the use of back or service elevators
- he recruited support staff to assist in carrying his weapons-filled luggage to his suite

Paddock's heterosocial relationships may have appeared normal but his marriage life had difficulties. Meeting Sharon Brunoehler during his exit from CSUN tempered his direction toward a dangerous masculinity. He found success in his profession as an accountant; but, within a month's time, following their marriage in JUL1977, a disappointment struck.

On 16AUG1977, at aged 42, Elvis Presley died. The popular rockabilly entertainer had gained an incredible following; yet, at age 42, he died from respiratory failure, due to his addiction to drugs. Relatives have said that SCP enjoyed listening to country music. Eric Paddock would tell investigators that SCP would often attend live performances. Sharon Brunoehler and Paddock divorced after only two years of marriage!

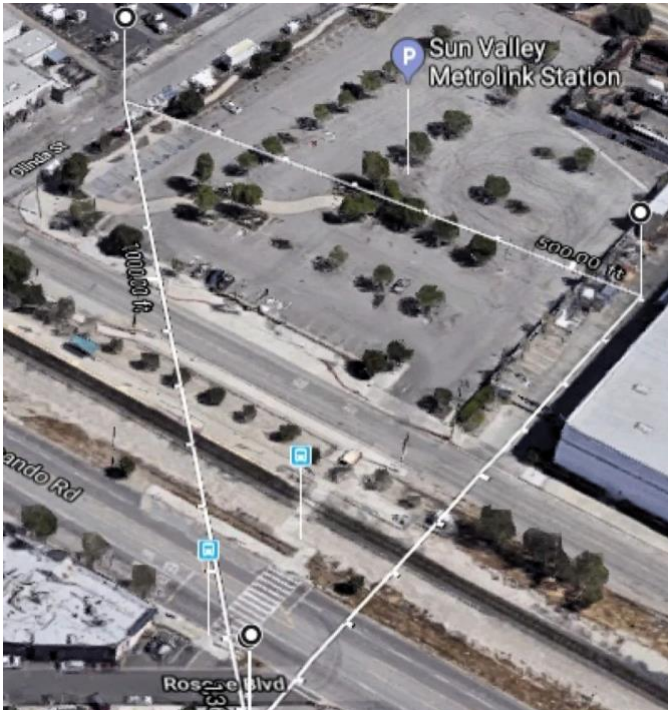
Within ten years, SCP left his government positions. Approximately eight years after he graduated from college, he began to invest in properties and real estate with his brother and with his mother. SCP still wanted to provide income for his "family".

By the time SCP move on to real estate investments, he had a second marriage, to Peggy R. Okamoto. They both had attended the John H. Francis Polytechnic High School, in Sun Valley,

Los Angeles County. The number of persons to marry a high school friend or acquaintance, especially after a separation of fourteen (14) years, since high school graduation, remains limited.

Their relationship had one piece of jagged truth regarding ethnic specificity. Of grave importance, during World War II, the U.S. Government forced thousands of Nikkei, living on the west coast, from their homes and businesses to enter detention camps. This shard of information contributed to SCP's regard toward PRO.

The Wartime Civil Control Administration (WCCA) arranged the reconstruction of the Santa Anita Raceway, used to house Japanese Americans in a temporary location. The assembly center located 13 miles northeast of Los Angeles, gathered < 19,000 evacuees, having > 8,000 persons living in rehabilitated horse stalls. Most likely, some internees had proximity to a saddling paddock where trainers saddled horses before they race.



Google map w/ triangular measurements showing distances and angles from the Richards Microfit Gunstocks business to area where Japanese American returnees lived, known as the "Roscoe Trailer Park", in Sun Valley, CA.

This exclusion from normal life for a selected ethnic group by the War Relocation Authority (WRA) unsealed the misinformed feelings of thousands of persons of an ethnic majority (POAEMA).

To counter the distorted and propagandized leadership of this opposition towards returnees, on 17DEC1944, after the 1944 elections, President Franklin D. Roosevelt issued Public Proclamation Number 21, rescinding the exclusion orders. By 02JAN1945, Japanese Americans had the legal right to return to their communities.

If the opportunity for returnees to get housing faded by the mid-point of 1946, a large number of them had to move into emergency housing, into trailer parks located in Burbank and in Sun Valley, CA. Combining a

population as high as 5,000, some trailer camps continued to house returnees until 1956, nearly eleven (11) years after the war had ended.

Internees called the site in Sun Valley, located east of San Fernando Road along Olinda Street, the "Roscoe Trailer Park". It located 2.2 miles from the John H. Francis Polytechnic High School and 2.4 miles from Richard E. Byrd Middle School. Looking towards the southwest, the distance from the intersection measures approximately 470 ft to Richard's Microfit Gunstock storehouse.

SCP had continued employment with an aerospace company, tangentially connected to the Boeing and Lockheed Martin Corporations. PRO assisted and worked with SCP in developing and renovating properties. Both of their names connect to a residence in Cerritos, assessable when driving on CA-91. Even after SCP and PRO divorced in 1990, PRO still received payment from the sale of a 20-unit apartment they had established.

The treatment of this relationship bonds to a subtle yet aggressive advancement. Specifically, PRO holds Japanese heritage. Whether before, during or after their renewed relationship, SCP took an interest in certain facets of Japanese American historicity, even if it appeared that he only dined on Japanese menu. The mainstay of this relationship ignites with his knowledge of the treatment of Japanese Americans in Sun Valley and with SCP's increasing financial investments, with PRO, in the Gardena region of Los Angeles.

SCP's relationship with Marilou Danley began in 2013, during her employment in Reno, NV, functioned on the false premise that their differing personalities would protect each other from day-to-day judgements. Neither physical attraction nor censorship sublimated SCP's insecurity and his anxiety-filled behaviors - in his gambling, his frenzied purchasing of weapons or his verbalization (slips of the tongue) toward MD and others.

The Republic of the Philippines, an archipelago located in Southeast Asia, has a northeastern maritime border with Japan. MD had some experiences with travel on water prior to her living in the United States. SCP took at least twenty (20) excursions on cruises. MD had stated she accompanied SCP on only nine (9) cruises.

On 14SEP2019, MD took a flight to the Philippines. On 25SEP2019, she had another flight from Tokyo, Japan to Manila, Republic of the Philippines. While visiting with her relatives, she received two (2) wire transfers, one on 26SEP and another on 28SEP, each \$50,000 dollars. She believed SCP sent it so her family would build or purchase a new home. MD also thought that it meant an end to their relationship of more than four years.

She has stated that she knew nothing of SCP's intent. Yet, a reason for emphasis on the number of excursions aboard sea liners gives an underlining reason for her feelings of distress. The number nine (9), when collecting information from the use of tarot cards, also part of video poker, although not evidenced in most casinos, points to a readable statement for the "nine of swords". This card, in representing accidents, depression, grief, mental anguish, and paranoia, furnishes a disguise to her motivations.

Also, it takes three (3) minutes to walk from the MBHC to Psychic Sessions, located at 3953 S Las Vegas Blvd., directly across the street, or less than 640 feet. MBHC does not offer chances using tarot cards.

II. Methodology - individual's employment of logistics and deployment of his weapons
In September, prior to the mass casualty event, SCP and MD had booked rooms in the MBHC. These rooms overlooked the Las Vegas Village concert area. About two weeks prior to the event, he requested to have a suite with a northeast view.

He returned to the hotel later that month, robotically assigned a suite on the 32d floor - 32-135; and, retained the adjoining room, 32-134, four days later. This accountability, using data-driven predictions or decisions, determines the design in how algorithms work. Besides, SCP did not have to pay for his suite, due to the hotel's policy of satisfying patrons who gamble large sums of money.

SCP had his vehicle, a 2017 Chrysler Pacifica Touring, parked in the Mandalay Bay Parking Garage. His vehicle, basically a large van, would have automatic sliding side doors and luggage gate. Rear seats would fold toward the rear, and tuck under the luggage area. When found by police officers, its luggage space enclosed 50 pounds of Tannerite, weapons and ammunition.

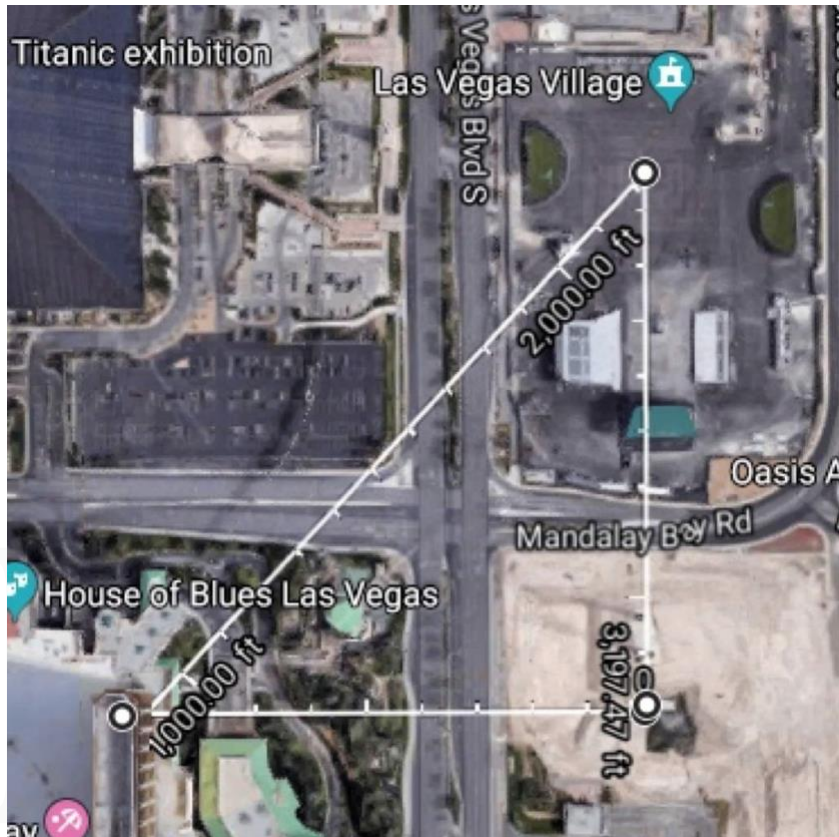
Having a volume of Tannerite provides more interest into SCP's intent. Since Tannerite works as a binary explosive target, an individual must mix a sensitizer with an oxidizer – fuel with an atom-

transferring agent to initiate combustion. After mixing both products into containers, the user would setup on a shooting range. The objects provide immediate feedback to persons doing target practice, especially for weapons employing high velocity rounds greater than 2,000 feet (609.6 meters) per second. When the shooter fires on the target, it will exhibit a visual and auditory blast display.

Also, his attack included two unprotected jet fuel tanks located on McCarran International Airport's property. His two snap shots, possibly using incendiary rounds, on the tanks did no damage but indicated his desire to reproduce, on a greater scale, the effects of an explosion.

Target practice also required purchasing other materials, due to cost. SCP may have used a handgun paddle target or a double magazine paddle carrier or an autolocking paddle holster or a paddle-magazine release. Over the years, he certainly had time to learn about and use these accessories.

The tacit trade-off in acquiring forty-nine (49) weapons increases the probability of engagement by an individual undergoing mental impairment during an extreme criminal spin. The actor(s)



Google map w/ triangular measurements showing distances and angles from the Mandalay Bay Hotel and Casino to area where entertainers performed during the Route 91 concert.

decline in self-control prior to his assault required reporting, by others, in close proximity. In the purchase of an excessive number of weapons, state and/or federal officials should have received an alert, based upon factors that lead to the probability of an attempted crime.

- 24 guns inventoried in the two rooms rented at the Mandalay Bay.
- 18 guns inventoried in his Mesquite residence.
- 07 guns inventoried in his Reno residence.

The decision in United States v. Mandujano, case law posits responsibility upon law enforcement and upon the courts to attempt the mitigation of risks, which, when undone, leads to a completion of steps required for intentionality:

1. the desire to cause chaos 2. the intention to continue a non-verbal system of communication, with self-and/or with others 3. the skill in utilizing weaponry and technology to exhibit trickery	4. the belief that the act benefits a dangerous masculinity 5. the awareness that one's embodiment of the "lone genius", leads to a form of immortality
----------------------------------------------------------------------------------------------------------------------------------------------------------------------------------------------------------	------------------------------------------------------------------------------------------------------------------------------------------------------------

Table 1: The individual's cognitive state determines intentionality.

He started buying weapons in 1982. In evidence, SCP had purchased some weapons from stores in Nevada: New Frontier Armory in North Las Vegas, Guns and Guitars in Mesquite, Cabela's in Verdi; and he had occasions in gun stores in Phoenix, and St. George, Utah. Oddly enough, he has no record of a weapons purchase from the Las Vegas Shooting Center, located at 5155 S. Dean Martin Dr. Suite #1 Las Vegas, NV 89118, just a 3-minute drive from the Mandalay Bay Hotel.

Moreover, the International Game Technology (IGT) corporation that William "Si" Redd had started, now under the management of a PLC in London, United Kingdom, located at 9295 Prototype Dr, Reno, NV 89521, stands just two minutes from the Big Shot Indoor Range, 9425 Double R Blvd, Reno, NV 89521. Paradoxically, SCP passed any FBI background checks before the purchases.

The location of the Mandalay Bay Parking Garage also initiates a subtle context for SCP's movements. Located on Frank Sinatra Drive, the six-level large parking garage gives easy access to the hotel. He tried to blend in with the "local population".

On foot from the parking spaces, SCP had to walk across the casino floor to the guest elevators. The Rangoon News Bureau, "a newsstand near the elevators inside Mandalay Bay" has serviced customers since the hotel opened. Rangoon, now named Yangon, holds the demographic marker as the largest city in Myanmar.

Elevator authorities were at a loss as to how a 64-year-old gambler and retired accountant had hauled a vast arsenal of long-range rifles, in ten suitcases, into the hotel, in order to launch his maniacal assault. Twelve (12) of the rifles found in his hotel room were outfitted with a bump fire stock, which allows a semiautomatic rifle to fire rounds faster, mimicking an automatic weapon.

No doubt, the “bump fire stock” reminded SCP of Richards Microfit Gunstocks, the business at the corner of San Fernando Road and Roscoe Blvd. in Sun Valley, CA. SCP had also positioned computers and cameras in believing that he would detect any authorities that may interfere in his attack.

The Las Vegas Metropolitan Police Department have an operations center at 4860 S Las Vegas Blvd, Las Vegas, NV 89119, three (3) minutes from the MBHC.

III. Evaluation - individual's choices as vivid effects of civic canopy

The longing for a parent, even if the parent failed at his duties as a father, still animates the child to seek emotions and reinforcement. Prolonged absence does not mean the child remains cloistered, always waiting to have a parent, someone, to arrive on a white horse and burn down the puritanical incongruities encompassing his world. The child will attain adulthood. Any change has an effect. Any adaption has an effect.

Immediately, Sun Valley held the next piece to the puzzle for SCP's modus operandi. Prior to his sprees in casinos, his overabundant travel, his location at the 32nd floor window of the MBHC, and precisely before 10:05 p.m., when he began to engage concert goers, using semi-automatic rifles, accessorized with “bump fire stocks”, he felt something.

SCP, with a mother and three brothers, matured while living in an ever growing urbanized, multicultural milieu. He gained prosperity when taking degrees from secondary and university education levels. The exception to this process, while developing a formative Weltanschauung, indicated that his inclusive planning processes established constraints toward a more democratic humanity. Why?

Without his father, SCP harbored an undiagnosed urge to seek satisfaction in the life that surrounded him. If he acted out in school when not following directions or when he chose to continually sit alone in the cafeteria, it indicated how a lonely young man tried to establish his self-interest. But, by sitting alone, he made himself into a picture, not unlike the singular image of his father on the FBI's most wanted list.

On the other hand, SCP had to learn about things, encounter them, not just as a reflex, but as condition for achieving self-consciousness. As a newspaper delivery boy, managing a route each day invigorated his reach, making life worthwhile, not just measly noise.

He did join the high school tennis team, at least for one year. He had to attend school assemblies, whether to socialize with other classmates or not, when listening to general announcements, cheering on student teams, watching the actions of the mascot, the Poly Parrot, or when considering the adventures of a Saracen warrior, the character chose to represent the graduating class of 1970.

Interestingly, on 09AUG1969, police had arrested members of the Manson crime group. Twenty days later, on 29AUG1969, during the Labor Day weekend and prior to the start of the school year, TWA Flight 840, an international flight from Los Angeles to Tel Aviv, survived a

hijacking, led by Leila Khaled, a member of the Popular Front for the Liberation of Palestine. Both stories received tremendous interest throughout the Los Angeles region.



A student from John H. Francis Polytechnic High School representing a Saracen – an Arab, Muslim warrior of the Levant, who “would always protect his horse” - the personality which identified the class of 1970.

If he had taken time to study constellations, he found that he had a relationship to what exists beyond the upper atmosphere; and, perhaps, he assumed that his zodiac sign gave his life meaning. When Eric Paddock interviewed with authorities and media he stated, "Mars just fell into the Earth." Mars represents the god of war, as did SCP's zodiac sign's ruling planet, in addition to having explosive tempers.

So, as SCP prepared to attend college, no one can use an historical erasure to the vividness of the icons that he considered. Accordingly, he acquired at least four symbols:

1. A parrot that represented JHFPHS as well as the physics of flight and something he will see again, when he

attends a Reno casino.

2. A medieval Saracen warrior that plays a major part in describing the cultural and historical role of Arab influence in Europe; and, as language connects others in a communal act, through repetitive mediums, it allows the use of the Saracen warrior to carry anti-Semitic attitudes toward Jews.

3. An astrological symbol that added a deeper narrative to his choices when associated with war.

4. A changing of rules, when caught up in local, state and national socio-political affairs during the 1970 spring semester, district wide teacher's strike and anti-war protest disturbances. Before attending college, CSUN (SFVSC) had closed in reaction to the shooting of thirteen (13) Kent State University students in May.

Within four days of SCP's seventeenth birthday, the possibilities of having - a diminished contact provided by teachers, a lessened number of days for quality education, a reduced amount of time for college preparatory consultation and faded educational opportunities at a neighboring college - dovetailing into an increasing number of protest in opposition to the conflict in Southeast Asia – exposed SCP to situations where others had plans that could easily defer his dreams.

Attending CSUN advanced SCP's gains, both socially and economically, especially with his studies in accounting and business management. Marriage to Sharon K. Brunoehler could easily have sanctioned SCP's ethnic identification to thrive. She, having a German surname and SCP having Scandinavian, as well as other, lineages seemed a well-arranged fit, especially with SCP

being a whiz at math. Their stereotypical lifestyle of two, newly graduated, on the go mid-20-year-olds, could have received admiration from others. Unfortunately, it did not foster the strength needed, in the marriage, to move past two years.

Life as a married man did not have the same camaraderie as he had with his family; and, even there, life's fullness appeared more as a standard, mechanical behavior. His more cerebral emotions did not sustain a marriage that required happiness from anticipation, form and sentiment. When individuals compare lives, often they encounter feelings of grief and shame. Those feelings arose when Elvis died, having sung a song about loneliness titled *Heartbreak Hotel*, a place where SCP, in time, would fulfill the chorus line:

"They'll be so lonely, they could die".

SCP acquired a deeper solace for Japanese Americans. Once he returned to his high school arena, the memories that he cherished, and only a limited number, rebounded when he recovered his relationship with Peggy R. Okamoto. Not a thing, at first, nevertheless they accepted each other's perceptions. Though this relationship did surprise themselves and others, results from their bodily effects acted as the prolog to physical responses, ending in the antecedent to their emotions, or to the idea of an emotion.

SCP allowed himself to try an adjustment to his social environment. He had to construct a new consideration on ethnic diversity. His control, as an accountant, over numbers did not have any likeness to his analysis of a power relationship with PRO. Their interactions surveyed the more concrete world. They placed an emphasis on objects, images and physical space. Joining together to invest in domestic property and to rehabilitate apartments took considerable motivation and effort to learn new things. They enacted behaviors contrary to their previous selves. In so doing, each improved their earlier dispositions, if not by permanent repression, at least while each imagined success in a multi-cultural world.

PRO's world brought thoughts of experiences that can make governments fall. Did she have family members locked away during WW II? Perhaps her father had to move from a loved filled home and stay, for more than three years, in a concentration camp; and, then, after the war, enter a camp as a returnee? SCP knew he had like feelings, although his father went to prison for committing crimes.

Using his professional work to prevent a gush of feelings, he basked in his burgeoning wealth and aspirations. SCP and PRO had a motive to succeed in their newly acquired business: real estate ownership, management and sales. Attainment depended on their knowledge of local communities and their adjacent areas, property values, real estate negotiations, demographic variables, and how communication develops a sense of trust.

Their choice for investment did not include luxury properties. Their aim moved from single-family homes to specializing in apartment communities. SCP's Texas venture, having a sale for nearly \$15 million dollars for the Mesquite Central Park Apartments, amounted to self-actualization, realizing the progressive experiences gained between his first investment at El Paso Drive to his closure on Via Ventura. Their brainstorming brought about innovation, both technically and serendipitously; but, these sets of adoptions did not save SCP's second marriage.

As a matter of fact, these activities could not neutralize SCP's need to express his feelings. He wanted to explode. He had remained quiet during much of his life, not talking about his personal reactions to longing and loneliness. His style of life still contained and made manifest his inner tension, which involved his emotional disposition, which influenced his future preferences. He continued to buy weapons.

Similarly, the next piece to the puzzle for SCP's modus operandi sets in Gardena, once the statistical leader in the growth of Japanese Americans in the contiguous United States. The neighboring city of Torrance now performs that role; and, together the two communities have secured the largest market for Japanese controlled corporations.

Not just a community of the "working class", but a place, no, a laboratory, Gardena had a social engineering experiment occur in 1942. The federal government presented a fear-based, human resource model that must never receive further commitment by any authorities. The aftermath of this project, sending Japanese Americans to internment facilities, found its way back to Sun Valley, Los Angeles County.

It takes about an hour drive from the Roscoe Trailer Park to get to the War Relocation Authority office on Western Ave. in Gardena, if either still existed. PRO knew about these agencies. Her family members had memories of removal, incarceration and return. SCP generated an agency, through his emotional weaknesses, to activate his physical responses by unconsciously introjecting and incorporating attitudes and ideas into his own personality.

His travels to Southwest Asian nations reawakened his knowledge that, in some countries, required criminal homicides can retain a greater effect upon the individual and the population. It only added to his set theory, even though the area has an infinite number of choices. He became the Saracen warrior, protecting those forced into prisons, incarcerated behind fencing, removed from their property, like the Rohingya Muslim demographic in Myanmar.

As a continuous piece in news media and in international forums, world attention frowned upon the Naypyidaw government and its crimes against humanity and forced removal of Rohingya Muslims. On 05SEP2017, more than 120,000 Rohingya Muslims fled their homesites, aggravating an emerging humanitarian crisis and a risk of ethnic cleansing.

Mandalay locates 100 miles northeast of the Rakhine State, home to the Rohingya people. When SCP left the MBHC garage after entering from Frank Sinatra Drive, did he think of the song "*On the Road to Mandalay*" or did the song's eighth line touch his memory –

"Can't ya hear their paddles chunkin' from Rangoon to Mandalay?"

As he walked past the Rangoon News Bureau shop it conveyed a deeper meaning, it concealed a deeper, more morbid consequence, it made him think of people as being objects.

SCP's raison d'être grew in intensity, even as he extended his services to Marilou Danley. But his symptoms could not generate a reaction from her, not immediately, since he concealed them from all counsel and intervention. He stood away from communicating with almost everyone,

preventing any discovery. Yet, every movement that SCP had, causation had stemmed from his state of mind.

Relatedly, the next piece to the puzzle for SCP's modus operandi sets in his real estate options. His constant seeking out of Del Webb properties, as in residences in Del Webb premises in Henderson and Mesquite. He chose to live on a street named W. Del Webb Parkway in Reno, NV. Remembering, Del Webb had built the Poston War Relocation Camp and Del Webb assisted in construction of the Flamingo Hotel and Casino. Did SCP remember that Ernie Primm, whose name adorns a swimming pool in Gardena, had sold the Primadonna Club in Reno, in 1974, to the Del Webb Corporation? SCP had commenced to pursue his targets.

Danley should have known of SCP's decline after knowing about his extrinsic temporal structure and "work" schedule. She should have been able to analyze SCP's schedule and realize an immediate problem based on her understanding of their implicit relationship. His decision to "send her back to the Philippines" determined his safety so no one could advise the authorities and "rat him out".

His manifest racism, his domineering male traits, his manipulative methods to remain as the magnet, his untruthfulness, his lack of affect, his sense of narcissism, his phony connection to others and his means of abandonment reflected SCP's psychopathic motif.

No one supported SCP, psychologically, especially as he grew older. His ID proved that he didn't share his internal conflict with others because he had no meaningful attachment to anyone. With not having a father love him and provide psycho-social treatment, leaving his family to deal with law enforcement authorities and never communicating with his four sons, deepened SCP's need for security. How did he ever predict how other adults would react to his needs when his ID metastasized into extreme ambivalence? He used child pornography, as did his brother Bruce, to visualize attacks upon minors.

Concerning this, the MBHC started presenting "*Michael Jackson: One*" since 2013. Michael Jackson had child abuse allegations made of him in 1993 and in 2003. In MAY 1994, Jackson married Lisa Presley, daughter of Elvis Presley, the original singer of "*Heartbreak Hotel*".

Some enabling, defense mechanisms worked, until he cut himself off from his family in Florida and from MD, before his attack. Could any attachment relationships help SCP interact more soundly? Now, it occurred, too late. SCP could no longer consider himself a functioning adult. He had to complete his plans, plans that he had made years in advance.

His purchase, storage, exercise and training with weapons projected the destruction of his body onto the destruction of others. Without a belief in love and long-term interdependence, SCP did not choose the right direction to the right goal. The secret world that SCP had designed, constructed and maintained would reveal itself through his own accounting: his implicit and explicit costs.

Part 2 - Prevention, Mitigation and Recovery

IV. PMR - Assess variables 'praecurrere' to risks, focusing on threats, vulnerabilities and consequences (TVC's) for the purpose of having proactive and protective characteristics versus corruption, negligence, human error, complacency, obsolescence, attacks and emergencies.

"Terrorism is the calculated use of unlawful violence or threat of unlawful violence to inculcate fear; intended to coerce or to intimidate governments or societies in the pursuit of goals that are generally political, religious, or ideological." U.S. Department of Defense

PMR includes extant preparedness and response protocols, constantly in operational readiness to equip, train and sustain our personnel's requirements, before a probable event, known or unknown. To mitigate and to reserve a capacity to recover from the event/s effects, best practices will determine and improve approximation accuracy, which will support all lower derivatives and values, reducing the amount of truth data needed.

The plan, on the ground, to prevent a human source from incorporating a hostile action requires human and robotic measures, to swiftly perform a hard and/or soft hit on every product to which the suspect(s), the person(s) of interest or the high valued target(s) has accessibility. The incident commander will revise and change the concept of operations (CONOPS) or concept of fire support, execute a branch plan, or take other measures to reduce or bypass the aggressor's course of action.

The target will present based on general theory protocol and when calculating civic canopy elements. If the subject has already exhibited potential errors in planning, then constant surveillance, both visual and electronic, will maximize security. When the problem can't receive consistent treatment by the prepared decision maker, standing as the constituted authority responsible for the public's safety, contingency planning will mandate an insertion of an intergovernmental agency, capable of multi-tasking the rapidly changing, complex environment.

Mission Command and all tactical elements will not expose operational networks to unrelated personnel and must limit and minimize exposures to the public to complete mission tasks. Providing the staff with a common operating picture, even in a multi-objective environment, means requiring each support group to consider a pre-posterior decision analysis model, which includes maintaining friendly combat identification/counter-fratricide measures.

This model will combine a cost-based analysis that integrates the paradigm with different types of systems and technologies (ST's). Personnel who control ST's must possess the necessary technical and operational expertise for collecting, planning, coordinating, signaling, communicating and directing human and fixed capital in order to advise commanders while monitoring risks. In multiple domains, risks accumulate: air, climate, cyberspace, infrastructure, land, maritime, space, sustenance and in human interactions. Thus, stake holders must have a capacity to engage culturally and exploit opportunities.

A joint interdisciplinary agency approach to friendly and threat operations utilizes a mutualistic configuration, combining human capital and civic canopy elements. It provides an operational

platform beyond rote or rule-based monitoring of consequences. Direct reporting units (DRU's) will contribute by prioritizing the variables that construct worst event scenarios.

The valued outcome, ensuring innovation and often essential modifications within the organization, will disseminate with higher probability (WHP), in several aspects of financial management: quantifying cost efficiencies, devising contingencies (strategies and tactics), developing solutions and concentrate on responses. The objective of the operator's interface with the civic canopy construct remains prevention, mitigation, and recovery from attacks on personnel, populations, physical assets, or information.

When reviewing the case of Stephen C. Paddock, questioning the ability of interagency law enforcement (IALE) to have identified SCP as a threat, before his attacks, forms it as a reasonable inquiry. The working point of interest applies to the number of weapons that he purchased, especially semi-automatic rifles. Considering him as a threat to public safety depended on the optimum performance of specific rules and laws. Society demands that agencies develop controls that maximize required resources, civic canopy elements, experienced-based estimates and input derived from research, analysis, and evaluation of historical data from similar missions and systems.

The oft said statement that "background checks" or "background investigations" don't always guarantee safety indicates a procedural deficiency. This maladaptive aspect depends on a habit hierarchy system that points in the direction of and favors a distracting interest group or tendency. A substantial number of Americans has followed the archival evidence regarding attempts to influence weapon carriers and the dominant-negative reaction to any limitation(s) or regulation(s) on firearm purchases. However, the spontaneous choices of victims and other public groups that inundate news media, and their local, state and federal governments, must not grow extinct, brought on by conditioned reactions.

PMR has designated adaptive controls and regulations as the expected consideration, based on transfer (forensics of incidents and events). If not adopted by Congress and instituted by law, following the standards apropos a reasonably prudent person, it will reflect as negligent behavior on all joint interdisciplinary agencies.

The Second Amendment to the United States Constitution states, "A well-regulated Militia, being necessary to the security of a free State, the right of the people to keep and bear Arms, shall not be infringed."

A parent's data (1st Amendment) must influence the right of the relative to purchase (2nd Amendment) a firearm and whether to allow that person to continuously add weapons to that cache. It obviously increased the levels of risk: probability - seldom to frequent; severity - negligible to catastrophic. All of this done by a man in a pathological state who approached this extremely difficult task in stages. SCP's behavior, based on a sequence of conditioned reflexes and associations, did not externally join a foreign terrorist group (3rd Amendment).

His belief system accepted specific tragedies. Including himself, acting as the anti-hero, it permitted certain individuals, with their intolerant mechanisms, to maintain order and to gain specific gratifications. While lowering his criminal profile he congruently lowered his terrorist

profile. SCP did not discuss his paradoxical temperament due to an idea that he would be “ratting out” his past beliefs. Through his projection, he considered himself an extension of the hotel and casino life force, using his delegation of power and “white privilege”. Ironically, inside his self-made prison, he could not escape the capital punishment of a self-inflicted wound.

Eric Paddock said his brother, SCP, “didn’t love the casino.” EP thought of his brother with more decimal place accuracy than first considered. He continued, “The casino was a means to an end. The casino to him was like a job in Toyota in Japan, where you live in the Toyota apartments across the street, and then you go to the Toyota factory to work. That’s what the casino was. It’s a place where you lived and they were nice to you, and you could get it paid for by playing slots.”

V. Epilogue

A former student at John H. Francis Polytechnic High School in Sun Valley, California, who had graduated in 1970, wrote a post on a social media page about his alma mater during a forty-year homecoming celebration. They tried to remember a reason for attending Polytechnic HS. The writer gives no reaction as to why the class of 1970 chose a Muslim warrior archetype, in 1969, to represent their senior class, though it clearly had the elements of anti-Semitism, which did influence other students.

They wrote,

“... there is a universal truth that every adult at some point realizes: We are all always 17-years-old deep inside, just waiting for our lives to begin.”

[\(https://askmarion.wordpress.com/2010/10/30/looking-back-at-the-class-of-1970-reunion-fun/\)](https://askmarion.wordpress.com/2010/10/30/looking-back-at-the-class-of-1970-reunion-fun/)

Part 3 - Given, Adaptation, Descriptions, Residence

- VI. Given: A family having a nuclear-extended domain focused on higher cultural and social purposes moving toward a positive life-style.
- A. Irene Hudson married Benjamin Hoskins Paddock Jr. in a church in Reno, Nevada, on 16JUL1952
 - B. Stephen Craig Paddock's birth certificate recorded in Clinton, IA on 09APR1953
 1. Father of child: Patrick Benjamin Paddock (alias)
 2. Mother of child: Dolores Irene Paddock (alias)
- VII. Adaptation: A change in behavior causes a change in relationships and in residence
- A. In 1956, the Paddock family moved, from Iowa-Illinois, to Tucson, Arizona, a county in 1950, with > one hundred forty thousand residents, a county that nearly doubled its population since 1940.
 - B. With her husband, Irene Paddock had three younger sons, each born in Tucson.
 - C. In 1960, Benjamin Hoskins Paddock Jr. recidivated. Irene Paddock then moved to Sun Valley, Los Angeles County, CA.
 1. In 1960, LA County had > six million residents; and, the City of Los Angeles had ≤ two million, five hundred thousand residents.
- VIII. Narrative: Father - Benjamin Hoskins Paddock Jr. (BHP)
- A. Instigation from awareness of possible gains into active criminal status
 1. BHP had served in the U.S. Navy during WW II.
 2. Starting in his late adolescence, months after the end of the war, BHP began a criminal period.
 - B. Arrests and Conviction:
 1. From 1946, he had property and fraud charges filed against him. He served approximately eight (8) years in the Illinois State Penitentiary: 16830 IL-53, Crest Hill, IL 60403.
 2. BHP had committed, multiple times, grand theft – vehicle, against penal code 487 (d).
 - a. BHP's birthdate, listed as 1NOV1926, connects to the opening of U.S. Route 66 on 11NOV1926.
 - b. The distance from the Illinois State Penitentiary to U.S. Route 66 equals < six (6) miles, west of the facility.
 3. BHP's second conviction started in 1953, serving a sentence of approximately three (3) years.
 - a. His second conviction prevented Stephen Craig Paddock of having any practical relationship with his father.
 4. In less than three (3) years since BHP's release from the Illinois State Penitentiary, from FEB1959 to JUL1960, BHP robbed three branches of the Valley National Bank of Arizona.
 5. Police in Las Vegas, NV apprehend and arrest BHP, who earlier had enjoyed the hotels and gambling in the commercial casinos.
 - a. While undergoing arrest, BHP committed an assault on a peace officer, an FBI agent, in violation PC 245(c).
 - C. La Tuna, Anthony, Texas

1. Following his arrest, he received a sentence, in JAN1961, of 20 years, to be served in the Federal Correctional Institution, La Tuna in Anthony, Texas.
 2. On 30DEC1968, Paddock escaped from the La Tuna institution.
 - a. JUs1969, BHP's name went on the FBI's Ten Most Wanted list.
- D. The FBI Most Wanted List
1. When BHP made the TMW list, the Shiner Gazette, a newspaper in Shiner, Texas, wrote a description of BHP, on page 3, in its 02MAR1972 edition.
 - a. "Since Paddock has employed violence and has been diagnosed as being psychopathic with possible suicidal tendencies, he should be considered armed and extremely dangerous."
 2. In 1987, the Oregon Attorney General's office charged BHP with fraud, odometer spinning and illegal gambling, ending his hiding from authorities.
- IX. Narrative: Mother - Dolores Irene Paddock (DIP), known as Irene C. Hudson
- A. Married BHP in 1952, while in Reno, NV.
1. She moved to Tucson, AZ after corrections released husband from prison.
 2. In Tucson she gave birth to three more children, each a male.
 3. She took responsibility of the boys after the next arrest and incarceration of her husband.
 - a. DIP would continue to give a false answer when questioned as to whereabouts of the boys' father.
- B. After JUL1960, DIP undid any relationship with BHP
1. As a single, human female, moved from Tucson, AZ, relocating to Sun Valley, Los Angeles County, CA.
 - a. The Sun Valley community consisted of orderly ranch houses, parks and a Japanese community center.
 - b. In a "working class" district, wage earners populated the neighborhood.
 - c. SCP would attend the Richard E. Byrd Middle School a newly opened school in JUL1960.
 - d. The Valley Generating Station power plant increased electrical power throughout the valley but contributed to unsafe levels of pollution.
 2. Employed as a secretary and as a postal worker, DIP sustained her family on a salaried income.
 - a. A United States Post Office opened in Sun Valley on 15JAN1924.
 - b. A United States Postal Service operates at 46 Ratner St., Sun Valley, CA 91352, 0.4 miles from San Fernando Rd. and Roscoe Blvd.
 3. After SCP acquired real estate properties, DIP would reside in several of these units, before moving to a retirement community in Florida.
 - a. She has a domicile at 213 Isle of Sky Cir Orlando, FL 32828.
- C. Three of DIP's children remain living.
1. One of DIP's sons returned to Tucson, having a family and a profession - an engineer.
 2. One son, Bruce D. Paddock, had outstanding warrants in Los Angeles, still living in the Sun Valley area of San Fernando Valley, Los Angeles – arrested for having pornographic images of minors.
 - a. SCP's computer hard drive contained pornographic images of minors.

3. One son, Eric Paddock, lives within walking distance to his mother's home from his domicile at 320 Hammock Dunes Pl, Orlando, FL 32828 to 213 Isle of Sky Cir Orlando, FL 32828.
 - a. Eric may have communicated with his father in 1977, realizing that any stories of his father's death stood out as dreadful falsehoods.

X. Narrative: Assailant - Stephen Craig Paddock (SCP)

A. SCP developed while living in Sun Valley, CA.

1. While living in Arizona, he did not continue his musical practice with the piano, even though he had competed in a piano contest in 1960.
2. He attended public grammar, high school and university, located in the San Fernando Valley region of Los Angeles.
 - a. Interestingly, his name in the 1970 high school yearbook lists twice, having his first name misspelled: Stephen to Stephan.

B. SCP gravitated to video screens and video poker, resulting in a chronic-severe addiction for twenty-five (25) years.

1. During this period his open insult development (ID) allowed exposure to various interactional effects.

XI. Residence – Subject's permanent and temporary addresses

A. SCP had records of multiple investments in residential properties and apartments, several not shown.

1. Nevada –
 - a. domicile at 1372 Babbling Brook Court in Sun City, Mesquite, NV
 - b. domicile at 1735 W. Del Webb Parkway, Reno, NV.
 - c. domicile at The Montage Reno, 255 North Sierra St., Reno, NV, an up-scale condominium resort
 - 1.) a location close to the church where his parents did their marriage
 - d. residential property at 3031 Friendship Hill Cir, Sun City Anthem, Henderson, NV 89052
 - e. residential property at 2768 Thunder Bay Ave Sun City Anthem, Henderson, NV 89052
2. Florida –
 - a. domicile on 3405 Sansome Circle, Melbourne, FL 32940
3. Texas – three residences and one apartment complex in Mesquite, Texas:
 - a. 105 Clear Lake Lane, a residence where SCP's mother lived
 - b. residential properties located at - 317 Keswick Lane and 4804 Via Ventura
 - c. SCP registered as the owner and manager of the Mesquite Central Park Apartments, 4804 Via Ventura, Mesquite, TX 75150
 - 1.) Address used by SCP to secure a fishing license in Alaska in 2009 and in 2010, influenced by his attendance at Richard E. Byrd Middle School.
4. California –
 - a. residential property at 12531 Fallcreek Ln, Cerritos, CA 90703, locates east of the Gardena area and assessible when driving on CA-91.
 - b. apartment complex at 1256 West 29th St., in the University Park neighborhood of Los Angeles, just west of Vermont Ave., locates six (6) minutes, when walking, from the University of Southern California campus.

- c. apartment complex at 12906 Doty Ave., Hawthorne, CA 90250, a neighboring community northwest of Gardena.
- d. apartment complex at 13629 Kornblum Ave, Hawthorne, CA 90250, a neighboring community northwest of Gardena.
- e. domicile in Sun Valley, San Fernando Valley, Los Angeles, CA.
- 5. Arizona –
 - a. domicile in Tucson, AZ

Part 4 - Leaders and Role models, Relationships

- XII. Leaders or role models - Father figures associated to value of transference
 - A. William Redd – Si Redd started the International Game Technology company.
 - 1. Redd held ownership rights to video poker, a computer-based casino game.
 - a. By the 1980's, Redd's initial game of chance, Draw Poker, established a presence in casinos throughout Las Vegas and into other regulated, licensed betting venues.
 - 2. Once a slot machine manufacturer and distributor, Redd also owned the Oasis, a hotel and casino in Mesquite, Nevada.
 - a. Other owners demolished most of this property as recently as Redd died on 14OCT2003.
 - B. Thomas J. Bradley - Mayor of Los Angeles (29DEC1917 - 29SEP1998)
 - 1. During the period of SCP's maturation, the politics of Los Angeles moved away from majorocracy rule of Euro-Americans to a more multiple motif.
 - 2. Bradley exemplified this movement.
 - a. He served as the 38th Mayor of Los Angeles, from 1973 to 1993.
 - 1.) He had first run for office in 1969.
 - b. Bradley had served as a Lieutenant in the LAPD before his political career.
 - 3. In 1937, Bradley graduated from John H. Francis Polytechnic High School.
 - C. Danny Trejo - A well-recognized film and television actor
 - 1. Trejo had attended Polytechnic High School but did graduate.
 - 2. Trejo often plays the role of "bad guys" and anti-heroes.
 - 3. In his formative years, he entered the judicial system due to repeated property crimes and crimes with the use of violence.
 - 4. He starred in the film "*Heat*", released in 1995,
 - a. illustrating the immediate lives of bank and armored car robbers
 - b. illustrating their failed life styles
 - c. illustrating the authorities who apprehend criminals
 - 5. An older film named "*Heat*", released in 1986, depicted a character, living in Las Vegas, NV., who provides protection for emolument and has a never-ending gambling addiction.
 - D. Astronauts - Neil A. Armstrong and Edwin E. Aldrin Jr.
 - 1. Stepped and jumped on the surface of the moon on 21JUL1969.
 - E. Richard E. Byrd - Medal of Honor recipient for aviation and an Antarctic explorer
 - 1. SCP attended the Richard E. Byrd Middle School which locates in Sun Valley, CA., influencing SCP to receive a small craft pilot's license
 - F. Isaac Lankershim – A real estate developer and ranch owner

1. He owned 60,000 acres in the San Fernando Valley. The area had the Lankershim name; but, in 1927, the name changed to North Hollywood.

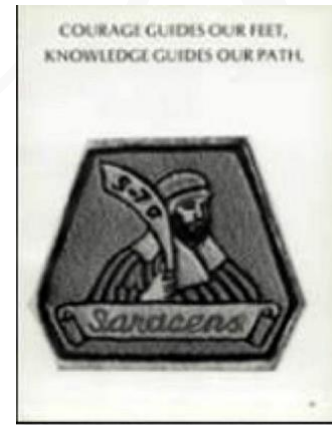
XIII. Relationships - Homo and hetero social relationships

- A. Marilou Danley: (MD) She had a complex connection with SCP as a 62-year-old female.
1. MD had traveled to visit with her relatives on 15SEP2017, during SCP's preparations and rehearsal for the attack and movement to the vertical location in the hotel in Las Vegas.
 2. MD remembered SCP's political comments
 - a. Expressed a dislike for President Barack Obama's administration and "was happy when President Trump was elected." "He believed President Trump would do something to stop illegal immigration."
 3. MD, while still married, moved from her residence in Sparks, NV. and began living with SCP at The Montage, an upscale condominium held by SCP.
 - a. Nevada law does not criminalize adultery.
 4. After meeting SCP at the Atlantis Casino Resort Spa, MD began a relationship with SCP
 - a. Ownership at the Atlantis Casino had a restaurant named the Purple Parrot, on site for > twenty-eight (28) years.
 5. She had employment from 2010 to 2013 as a high-limit hostess for Club Paradise inside the Atlantis Casino Resort Spa in Reno, NV.
 - a. Most likely the stage when she started a relationship with SCP
 6. MD had employment with an airline in the San Francisco Bay area.
 7. MD had two previous marriages and another inter-racial (male + female) relationship, with a successful pregnancy.
 8. In Las Vegas, she married Geary Danley in 1990, and remained married for twenty-three (23) years, separating in 2013 and divorcing in FEB2015.
 - a. Geary Danley lived in Arkansas and retired to Reno, NV.; but, as reports indicate him as abusive (racist – male dominance) he may have returned to reside in Arkansas.
 9. MD first married when living in Australia, moving there from the Philippines with her daughter, from another relationship.
- B. Peggy Reiko Okamoto (PRO): SCP's second wife, the marriage lasted for six years.
1. They married on 09MAR1985, divorcing in 1990.
 2. Their relationship began fourteen (14) years earlier, while Okamoto and SCP attended John H. Francis Polytechnic High School, in Sun Valley, Los Angeles County.
 3. As listed in the 1971 yearbook, she had membership in student body government, in Girls League and on the Promethean Class Spirit Crew, an academic honors club.
 - a. In the 1970 yearbook, a list on page 91 places their names ten (10) photos apart.
 - b. PRO lists on six (6) different pages.
- C. Sharon K. Brunoehler: As his first wife, they married on 17JUL1977.
1. They married in 1977, divorcing in 1980.
 - a. They had no children during their marriage.
 2. They had both attended CSUN.
- D. Joseph Klotchman: School Peer

1. Joseph Klotchman, who graduated a year ahead of SCP, said he knew Paddock at Francis Polytechnic High School and Richard E. Byrd Middle School, in Sun Valley, CA.
 - a. As adolescents, they both had an interest in astronomy.
 - b. SCP's astrological information: sign = Aries, zodiac symbol = Ram, zodiac element = fire, meaning = god of war (Mars)
 - c. It fits the start of the new year when applied to the solar hijri calendar used in Afghanistan and Iran.

Part 5 - Educational Services, Economic Background, Occupation

- XIV. Educational Services – SCP attended public schools and public universities.
- A. California State University Northridge: Public university located in the San Fernando Valley, in the city of Northridge, a part of Los Angeles. 18111 Nordhoff St., Northridge, CA 91330
 1. SCP attended CSUN between 1971 and 1977. He majored in Business Administration.
 - a. Before 1972, the university registered by the name: San Fernando Valley State College.
 - 1.) As San Fernando Valley State College, students participated in closing the facilities during the MAY1970 anti-war strikes.
 - B. John H. Francis Polytechnic High School: Public secondary high school located in the San Fernando neighborhood of Los Angeles, 12431 Roscoe Boulevard, Sun Valley, CA 91352
 1. SCP graduated from Poly in the spring of 1971.
 2. The design of the school's mascot, a parrot, includes a large "P", meaning "Poly". s
 3. While in attendance, the preceding graduating class of 1970 chose the name "Saracens" for their special identity.
 - a. Saracen, identified by Europeans as an ethnic group of Arabs and Muslims, who lived amid the Crusades, in the Levant / al-Sham.
 4. Saracen activities cover nine (9) pages in the 1970 yearbook.
 - a. The group promoted the yearly "Saracen Prom".
 5. A different club, the "Promethean Scholars", fostered academic honors.
 - a. In the study of Greek mythology, note that the practice of animal sacrifice resides with Prometheus.
 6. Los Angeles Unified School District had a general teachers' strike which lasted from 13APR1970 to 13MAY1970. Some teachers and supporters did so as a combination of salary, reduction in the number of students in classrooms.
 - a. Some strikers and students remained out from school as an anti-war protest since events at Kent State.
 - C. Richard E. Byrd Middle School: Public primary school located in the San Fernando neighborhood of Los Angeles, 8501 Arleta Ave, Sun Valley, CA 91352



1. A sixth thru eighth grade school with only a five-minute walk to John H. Francis Polytechnic High School.

XV. Economic Background – Census data and demographic diversity

A. Contacts: Interactivity between differing ethnic and wealth groups

1. During the period when SCP lived in Sun Valley, a neighborhood in the San Fernando Valley, interactions of various persons and ethnic groups continued to expand, within LA County, even as the number of immigrants entering Sun Valley/San Fernando Valley declined.
2. During SCP's progression, he lived in a segregated community, a tract having a supermajority of persons of an ethnic majority (POAEMA) and a minimum of intergroup relations.
3. Income: Median, average and consumer price index
 - a. The median family income per Los Angeles County: 1959 = \$27,649
 - b. The median family income in the United States: 1959 = \$22,210
 - c. The average (median) income of families in 1960 was \$5,600.
 - d. The Department of Labor listed the Consumer Price Index increase as 124.6 in 1959 and 126.5 in 1960.

XVI. Occupation – Self-employed and reward management for services / labor performed

A. Gambler: SCP invested in video poker for > twenty-five (25) years.

1. SCP acted as a "midlevel high roller", often playing one-hundred dollars (\$100.00) per-hand poker:
 - a. Studying the "pay tables" of the Video Poker Machines in the casino
 - b. Knowing when and how the casinos' promotions gave upward movement to payouts.
 - c. Studying the series or sequences of particular VPM's
2. SCP used money from real estate ventures to fund his deepened addiction to VPM's in Las Vegas, Reno and other locations.

B. Real estate entrepreneur: SCP invested in real estate > thirty (30) years.

1. SCP enters the real estate business in the mid 1980's while still employed with an aerospace company.
 - a. His initial purchase of properties started in NOV1985.
 - b. SCP included both his wife, mother and brother in financing and managing properties.
2. In 1986, SCP and his brother Eric Paddock, had invested in a duplex rental unit in North Hollywood, Los Angeles.
3. SCP had purchased a property in 1988, located near the Los Angeles International Airport and approximately 3,000 ft from the Hawthorne Municipal Airport runway, in Hawthorne, CA.
 - a. He registered the address with the FAA.
4. SCP had purchased a property in 1992 in Hawthorne, CA
 - a. In 2007, it sold for < five-million dollars.
5. SCP continued to purchase property in the Los Angeles area and also completed financial deals in Dallas-Wichita, Texas.
 - a. The property in Mesquite, TX had one hundred eleven units, and cost SCP eight million, four hundred thousand dollars (\$8.4 mil).

- b. SCP sold the property in 2014, gaining > five million dollars (\$5 mil) in profits.
- C. Certified Public Accountant: SCP had employment after graduation from CSUN
 - 1. Boeing and Lockheed Martin: From 1985 to 1988, SCP took employment as an auditor in the aerospace-military-industrial field, especially in a predecessor business of LM.
 - 2. Defense Contract Audit Agency: SCP worked more than a year at the DCAA after leaving the IRS.
 - 3. Internal Revenue Service: From 1978 to 1984, after graduating from CSUN, SCP took employment with the IRS.
 - a. He established himself as a chartered accountant that required him to maintain a minimum level of professional development in order to stay professionally competitive.
 - 1.) SCP did not move toward working as a chartered accountant in media and entertainment.
 - b. SCP would have had to communicate successfully when engaging with people and not just consider oneself a numbers person.
- D. Non-professional: Distribution and dispatching
 - 1. U.S. Postal Service: From 1976 to 1978, SCP took employment as a letter carrier while matriculating at CSUN.
 - 2. Local Airport: SCP worked a night shift while enrolled as a student at CSUN.
 - 3. Local Newspaper: Newspaper carrier delivered, possibly, the Daily News along a specific route, often memorized.
 - a. SCP would have used a tally sheet, often memorized, in order to collect fees on set days, from homes and offices.

Part 6 - Infra-structure, Transport

- XVII. Infra-structure – Institutions, buildings, casinos, roads, streets, tunnels, airports, historical markers located where SCP lived or had spatial connections:
 - A. Institutions: Particular religious institutions close to SCP's probable engagements
 - 1. The San Fernando Valley Hongwanji Buddhist Temple, located at 9450 Remick Ave, Pacoima, CA 91331, started construction in APR1961, with its dedication on 11NOV1962, and physically connects to the San Fernando Japanese American Community Center (JACC).
 - a. JACC locates 1.8 miles and five (5) minutes north from the John H. Francis Polytechnic High School in Sun Valley, CA.
 - 2. The Theravada Buddhist Center, Inc or Wat Thai of Los Angeles: With a current address at 8225 Coldwater Canyon Ave, Sun Valley, Wat Thai initially located on Sepulveda Boulevard.
 - a. In JUL1971, Thai monks converted a private residence into a working temple. Since the site did not meet official standards for construction, by 22DEC1971, the monks filed for a temporary temple permit.
 - b. In 11JUN1979, Articles of Incorporation allowed the construction of a Thai-styled main hall, which opened, after ceremonial events, in OCT1971 (B.E. 2514).

3. Between the triangle formed by Highways I-105, I-405 and I-110, close to SCP's properties on 12906 Doty Ave. and 13629 Kornblum Ave., Hawthorne, CA 90250, locates -
 - a. Three Buddhist temples or prayer centers in Gardena,
 - 1.) The Gardena Buddhist Church 1517 W 166th St, Gardena, CA 90247
 - 2.) Chua Linh Quang 3224 W 135th St, Hawthorne, CA 90250
 - 3.) Jodo Shinshu Shinrankai 15743 S. Normandie Ave, Gardena, CA 90247
 - b. Five mosques or prayer centers
 - 1.) The Islamic Center of Hawthorne, 12209 Hawthorne Way, Hawthorne, CA 90250
 - 2.) Baitus-Salaam Mosque Ahmadiyya Muslim Community 13211 Prairie Ave, Hawthorne, CA 90250
 - 3.) Masjid Faatimah Sunni Mosque 8316, 15012 Prairie Ave., Hawthorne, CA 90250.
 - 4.) Imamia Center 2150 Redondo Beach Blvd Unit B, Torrance, CA 90504
 - 5.) Momin Lodge 1918 Artesia Blvd, Torrance, CA 90504
 - c. Personal: SCP did not follow an organized faith group.
 4. SCP's female associate, MD, continued to attend Catholic religious services during their acquaintance.
 - a. She explained that SCP indicated his non-belief in God when saying, "Your God doesn't love me."
- B. Casinos: Venues that SCP knew or acted out a habitual aspect of his internal temporal structure
1. Mandalay Bay Hotel and Casino: Located at 3950 South Las Vegas Boulevard, Paradise, NV. opened in 1999, with ownership designating the name Mandalay, based on the Rudyard Kipling's poem.
 - a. MBHC managed floors numbered to 34, while the Four Seasons Hotel, in sharing structural space, managed floors numbered 35 – 39.
 - b. A mainstay attraction, "*Michael Jackson: One*" locates near the casino and poker room.
 2. Oasis Hotel and Casino: Located at 897 West Mesquite Boulevard in Mesquite, NV. adjacent to Interstate 15, opened in 1976, with ownership under William Redd.
 - a. Redd's International Game Technology company had its headquarters in Reno, NV, a 1:10 (one hour ten minute) flight from McCarran International Airport in Las Vegas.
 - b. He first bought a truck stop in Mesquite, NV., named it the Peppermill Resort and then renamed it the Oasis. Another Peppermill Resort locates in Reno, NV
 - c. The City of Mesquite and Mesquite Gaming stated that the demolition of the Oasis resort would begin on 06May2013.
 - 1.) City officials stated that the sky bridge, a fixture connected to the Oasis, which crosses Mesquite Blvd., would not get dismantled.
 3. The Primadonna Club: Located at 241 North Virginia Street, Reno, NV., owned by Ernie Primm.
 - a. In 1974, Primm sold the property to the Del Webb Corporation, changing its name to the Sahara Reno.
 - b. Primm also closed his two properties in Gardena, CA. - the Monterey Club in 1980 and the Rainbow Club in 1983 (in 1981, Primm died).

- C. Roads and Streets: Access ways throughout Los Angeles County and Nevada
1. Lankershim Boulevard: A main thoroughfare through the center of Sun Valley, it has a distance of 0.98 miles in a N-S direction.
 - a. At the north, end point of Lankershim Blvd, located at 8850 Lankershim Boulevard, finds the Sun Valley Japanese Community Center. Scheduled for 31OCT2019, a pilgrimage to Crystal City, TX to visit a WWII Department of Justice Internment Camp.
 2. Roscoe Boulevard: It has a distance of approximately 20 miles in a broken E-W direction.
 - a. As an earth road, stretching the length of the valley, it marked the boundary between the Lankershim Ranch and the Maclay-Porter ranches, along a north-south line.
 - b. In 1950, the community of Roscoe had its named changed to Sun Valley.
 - 1.) Frank "Puggy" Sica, a member of the "Four Sica Brothers", and an associate of Mikey Cohen and the Dragna organized crime groups, applied in the mid-1950's for a license to add a piano bar to his restaurant, Sir Sico's, located at 8351 San Fernando Road, in Sun Valley, CA. 91352, and received approval in 1967 from the state's Board of Equalization.
 - 2.) The Richards Microfit Gunstocks business, opened since 1948, locates directly across Roscoe Blvd. from Sir Sico's, at 8331 San Fernando Rd., Sun Valley, CA 91352
 - a.) Each business has an entrance from Roscoe Blvd.
 - b.) The word "roscoe" also means weapon, a term known by criminals
 - 3.) From 1945 to 1956, a Japanese returnee trailer court, called "The Roscoe Trailer Park", had located east of San Fernando Road onto Olinda St., in Sun Valley, CA.
 3. Sepulveda Boulevard: The longest street in the city and county of Los Angeles, having a distance of 42.8 miles.
 - a. Its northern end starts at the Eden Memorial Park and Rinaldi St. in Mission Hills. Its southern end starts at the Terminal Island Fwy. CA-103 and Willow St., in Long Beach.
 - b. Sepulveda Boulevard Tunnel constructed under the Los Angeles International Airport, beneath two runways, opened in 1953.
 - a. Prostitution and trafficking remain a serious problem along this motorway.
 4. Del Webb Parkway: This thoroughfare locates towards the western, outer-ring suburbs of Reno, Nevada.
 - a. Named for the construction and real estate magnate Delbert Eugene Webb.
 - 1.) SCP owned a residence on Del Webb Parkway.
 - b. During World War II, he received a government contract to build the Poston War Relocation Camp in western Arizona, used to facilitate the internment of Japanese Americans.
 - 1.) The War Relocation Authority office located at 16522 S. Western Ave. in Gardena.
 - c. Webb constructed the Flamingo Hotel and Casino in Paradise Township, an unincorporated area outside the corporate limits of Las Vegas.
 - 1.) Benjamin "Bugsy" Siegal supervised construction contracts in 1946-47, financed with criminal syndicate funding.

- a.) SCP's father had the same first name as "Bugsy" Siegal: Benjamin (Berish) "Bugsy" Siegal = Benjamin Hoskins Paddock Jr.
- d. William R. Wilkerson originated the building of the Flamingo Hotel and Casino; but, while under duress, he sold his shares to B. Siegal.
 - 1.) The Civilian Construction Agency stopped construction work on the Flamingo to begin an inquiry on allegations of fraud against the U.S. Government.
- 5. Highway 91: Originating in Gardena, Los Angeles, its western end starting at Artesia Blvd. in Gardena, CA and perpendicular to Vermont Ave. with its eastern end at Hwy 215 in Riverside, CA, then continuing north.
 - a. Gardena, until 1980, had the only licensed poker operations in LA County and had the title of "poker capital" of California.
 - 1.) Ernie R. Primm had challenged the legality of draw poker in 1937.
 - a.) The advantage of having the only licensed draw poker games led to the city receiving a high proportion of their revenues from an original tax base.
 - b.) During the 1930's, Mickey Cohen, B. Siegal's body guard, had controlled illegal bookmaking activities in Gardena.
 - 2.) Politicians and cardroom owners groomed the large Japanese American population by offering philanthropy to special interests.
 - 3.) The city of Gardena has named a swimming pool, located at 1650 West 162nd Street, Gardena, CA 90247, the Ernest Primm Memorial Pool.
 - b. E. Primm had invested in Reno and Las Vegas, as well as in real estate he developed adjacent to I-15.
 - 1.) The town of Primm, NV. locates along the CA and NV border, adjacent to I-15.
 - 2.) Two casinos continue to operate in Gardena, each within walking distance to Vermont Ave.
- D. Airports and passenger terminals: Aerodromes accessed by SCP
 - 1. The Burbank Bob Hope Airport: Situated approximately five (5) miles from the John H. Francis Polytechnic High School. It opened the possibilities of achieving, and then sustaining, the feelings of air flight.
 - 2. Whiteman Airport: A general aviation airport, it locates approximately four (4) miles from the John H. Francis Polytechnic High School. It opened the possibilities of achieving, and then sustaining, the feelings of air flight.
 - a. Another airport named Whiteman Air Force base locates in Missouri, where the Northrop Grumman B-2 Spirit stealth bomber operates, as part of the 509 Bomber Wing (509BW).
 - 3. SCP did invest in property having close access to airports, where he could store his planes and do other activities.

XVIII. Transport – Including ground, air and sea travel

- A. Ground - If SCP operated a motor vehicle his doable commute time to:
 - 1. Mandalay Bay Hotel from his residence on 1372 Babbling Brook Court in Sun City, Mesquite, NV, that he owned since JAN2015 ≈ 1 hour 15 minutes.
 - 2. Eureka Casino Resort, 275 Mesa Blvd, Mesquite, NV 89027, from his residence in Mesquite, NV ≈ 11 minutes.

3. Oasis Hotel and Casino, 897 W Mesquite Blvd, Mesquite, NV 89027, (now demolished) from his residence in Mesquite, NV using Falcon Ridge Pkwy. ≈ 10 minutes.
 4. Atlantis Casino Resort Spa, 3800 S Virginia St, Reno, NV 89502 from his residence at 1735 W. Del Webb Parkway ≈ 20 minutes
 - a. SCP assisted MD when he bought her a Hyundai Tucson SUV from a transport dealership in Reno.
 5. International Game Technology, 9295 Prototype Dr, Reno, NV 89521 from his residence in Reno ≈ 30 minutes
 6. Reno, NV from his residence in Mesquite, NV ≈ car 8 hours or air 1.10 hours.
 7. Interstate 15 to Las Vegas, NV ≈ 3 1/2 hours.
 8. Interstate 15 from his residence in Sun Valley ≈ 1 hour.
 9. California State University in Northridge from his residence in Sun Valley ≈ 1/2 hour.
- B. Air - If SCP had an interest in air transport:
1. SCP took two flights to the Philippines with his female friend, MD to celebrate his 60th and 61st birthdays.
 - a. They visited with MD's family members.
 2. Paddock had rented a hangar at the Mesquite Metro Airport from 2007 to 2010.
 3. SCP received a pilot license dated 17NOV2003, to fly single engine aircraft.
 - a. He had ownership of two (2) planes.
 4. His license expired in 2013 due to a medical condition of near vision that he did not renew.
 5. The Federal Aviation Administration would have used his Mesquite, Texas address for mail.
 - a. The aircraft's registration/tail number N5343M indicates ownership of a 2004 Cirrus Design Corp SR20, serial number 1402, fixed wing single engine (4 seats /1 engine).
 6. SCP owned property in Hawthorne, CA a neighboring community northwest of Gardena, located toward the LA International Airport and the Hawthorne Municipal Airport.
 - a. The Hawthorne Municipal Airport located
 - 1.) The Tom Bradley International Terminal at LAX officially opened on 18SEP2013.
 - b. While a resident of Sun Valley, CA. SCP lived in close proximity to Whiteman Airport, a general aviation facility. (IATA: WHP, ICAO: KWHP).
 7. While a resident of Sun Valley, SCP lived in close proximity to the Burbank Airport, a public airport facility. (IATA: BUR, ICAO: KBUR, FAA LID: BUR)
- C. Sea – If SCP liked ocean liners and took ≈ twenty (20) excursions:
1. SCP travelled on cruises to Spain, Italy, and Greece. SCP also travelled to Southwest Asia, including Jordan, Dubai, Abu Dhabi, Oman, Bahrain, Qatar, with some destinations in Egypt.
 2. MD accompanied him on nine of the cruises.
 3. While on a cruise to Mexico, persons partnered with SCP and MD heard SCP shout, 'When is Trump ever going to build that wall to keep out the Mexicans?'

Part 7 – Recreation, Entertainment

- XIX. Recreation - Open areas easily accessed by SCP and/or his associates:
- A. Community Center: San Fernando Japanese American Community Center (JACC) has a current address at 12953 Branford Street, Pacoima, CA 91331. Construction started in 1959. The purpose of this civic center lay in the reconstruction of the Japanese American social fabric, the reassertion of collective and individual initiative in stimulating Japanese American values, and the resituating of many returnees from World War II relocation centers (also described as concentration camps or detention centers).
 - B. State Parks: SCP owned a motor boat he used on Castaic Lake in Los Angeles County and/or Buena Vista Lake in Kern County, CA. in the late 1970's. Outings engaged the use of water-skiing. Several lakes under State and Federal regulations mandate lengthy inspections of water craft prior to launch onto the lakes.
 - C. Los Angeles County: Veterans Memorial Park, located approximately eleven (11) miles from Sun Valley. The Veterans Administration Hospital, that had undergone extensive damage from the Sylmar-San Fernando Valley earthquake in 1971 had closed. In 1972, the U.S. government ceded property rights to Los Angeles County. Subsequently, demolishing almost every remaining structure, redesigning and landscaping the 97 acres, the site reopened in 1979, as the Veterans Memorial Park.
 - D. Community Park: Masani "Mas" Fukai Park, located at 15800 Brighton Ave, Gardena, CA 90247, named for the former Gardena City Councilman and advisor to LA Supervisor Kenneth Hahn, inspired the Japanese American community following WW II.
 - 1. Born on 02JAN1927, when WW II came, the War Relocation Authority ordered his family to enter the internment camp on the Gila River, Arizona (First Nations' Land Holdings). He did leave the camp to enter the war as a U. S. Soldier. Years later, Fukai initiated an anti-drug awareness campaign in Gardena, aiming to prevent youth from using illegal pharmaceuticals.
 - 2. A distance of 240 miles separates the Gila River War Relocation Center from the Poston War Relocation Center.
 - 3. Fukai's son, Ricky Fukai, entered a plea at the Long Beach Superior Court, in JUN1998, on a charge of racketeering, by laundering money from bookmaking into bogus real estate investments.
 - a. Once officials detected the illegal operation, they found it centered in Gardena, CA.
- XX. Entertainment - Performers with fractured lifestyles, addictions and links to illegal activities
- A. Frank Sinatra (82/12DEC1915 – 14MAY1998) for four decades, performed in various establishments in Las Vegas, NV.
 - 1. Sinatra started in the film *Las Vegas Nights*, singing with the Tommy Dorsey Band.
 - a. The movie located at the El Rancho Vegas Hotel and Casino, which opened on 03APR1941, making it the only hotel and casino along Highway 91.
 - 1.) Guy McAfee, a former corrupt L.A.P.D. vice squad captain, managed the ERV once he had migrated from Los Angeles to Las Vegas in 1939.

2. MGM Resorts International acquired twenty-six (26) acres of ERV, turning the field into the MGM Resorts Festival Grounds, an open-air venue sponsoring musical artist and other performance art.
3. Sinatra sang the musical version of Kipling's poem, titled, "*On the Road to Mandalay*", with a release date in 1958, on the album "*Come Fly with Me*".
 - a. The song's third verse introduces a unique theme:

*"Ship me somewhere east of Suez where the best is like the worst
Where there ain't no Ten Commandments and a cat can raise a thirst
'Cause those crazy bells are callin' and it's there that I would be
By the old Moulmein Pagoda lookin' lazy at the sea"*

4. Frank Sinatra Drive opened in Las Vegas in 2004, after planning for the route began in 1990, running directly opposite the entrance to the Mandalay Bay Hotel and Casino parking garage.
- B. Elvis Presley (42/ 08JAN1935 – 16AUG1977) intermittently, from 1956 thru 1977, performed in various establishments in Las Vegas, NV.
 1. Presley finished the song "Heartbreak Hotel" in JAN1956.
 - a. Verses two and three introduce a unique theme:

*"Although it's always crowded
You still can find some room
For broken-hearted lovers
To cry there in the gloom
And be so, where they'll be so lonely, baby
Well, they're so lonely
They'll be so lonely, they could die*

*Well, the bellhop's tears keep flowin'
And the desk clerk's dressed in black
Well, they've been so long on Lonely Street
Well, they'll never, they'll never get back
And they'll be so, where they'll be so lonely, baby
Well, they're so lonely
They'll be so lonely, they could die"*

2. Presley had a televised broadcast on 28JAN1956 on "*Stage Show*".
 - a. Tommy and Jimmy Dorsey, big band talents, hosted the program.
3. DJ Bill Randle, from Cleveland, Ohio, introduced Presley.
4. Presley started his performance art at the New Frontier Hotel in APR 1956, located at 3120 South Las Vegas Blvd., NV.
 - a. Once named the "91 Club", under the ownership of Guy McAfee, due to its location astride US-91.
 - b. New Frontier Armory in North Las Vegas mimics the name of the hotel.
5. Presley starred in the film "*Jailhouse Rock*", released in 1957.
 - a. Two characters in the film serve time, one for manslaughter and one for bank robbery.

6. Presley starred in the film “*Viva Las Vegas*”, released in 1964.
 - a. The main character’s actions deal with race cars.
- C. Michael Jackson (50/29AUG1958 – 25JUN2009) / The Jackson 5
 1. Released a song in 1980 titled “*Heartbreak Hotel*” but changed the title to “*This Place Hotel* (a.k.a. *Heartbreak Hotel*)”, so as not to conflict with a title by Elvis Presley.
 2. On 23MAY2013, “*Michael Jackson: One*”, a production of Cirque du Soleil, opened at the Mandalay Resort and Casino.
 - a. The setlist included the title “*This Place Hotel (a.k.a. Heartbreak Hotel)*”, to which the character *Sneaky* performs a dramatization using a Michael Jackson styled sequined, white glove.
 3. MGM Resorts International sponsorship of open-air entertainment venues
 - a. Las Vegas Village: Route 91 Harvest Festival - MGM Resorts International sponsored this annual event which began in 2014 on a 15-acre site, located at 3901 S Las Vegas Blvd, Las Vegas, NV 89119, developing the area into a large capacity, open-air music venue.
 - b. Las Vegas Festival Grounds: MGM Resorts International began building in 2014 on a 26-acre site, located at 311 W. Sahara Avenue, Las Vegas, NV 89101, developing the area into a large capacity, open-air music venue.

Part 8 – Environment

- XXI. Environment 1 – Human: National - Confrontations ending in a single or mass casualty incident within the geographical boundaries where SCP lived and traveled.
- A. Pulse Nightclub, Orlando, FL. - 12JUN2016:
 1. Omar Mateen used two weapons, a SIG Sauer MCX semi-automatic rifle and a 9mm Glock 17 semi-automatic pistol, killing 49 and wounding 53 persons. He had declared his “loyalty” to the IS organization.
 - a. SCP’s mother and brother live in Orlando.
 - b. SCP had lived at 3405 Sansome Cir Melbourne, FL 32940.
 - B. Inland Regional Ctr 1365 S. Waterman Ave., San Bernardino, CA - 02DEC2015:
 1. Rizwan Farook and Tashfeen Malik had cooperated in making a large cache of weapons and energetic pieces, employed four (4) semi-automatic weapons, two rifles and two pistols, killing 14 and wounding 24 persons.
 - a. When using the Internet and social media scripts, they pledged allegiance to Abu Bakr al-Baghdadi, a leader of the IS organization.
 2. Actions of both assailants:
 - a. First, they had planned to attend an employee training event.
 - b. Second, before leaving the site, Farook placed a backpack, loaded with pipe bombs, on a table.
 - c. Third, after changing into their tactical gear, they returned to the area and began firing at the attendees.
 - d. Next, they escaped in a rented vehicle.
 3. Police apprehended the assailants and executed deadly force, killing both Farook and Malik.
 - a. I-215, CA-91 locate 5,252 ft. directly west of the scene.
 - C. Oasis Resort Hotel, Casino Mesquite, NV - 13MAY2005:

1. After a male suspect began firing a weapon inside a hotel room at the ORHC, police officers attempted at night to reach the guest but failed to receive any answers to their inquiries.
 - a. After a two (2) hour standoff, police finally executed an entry and located the suspect. Officials concluded that the deceased had a self-inflicted gunshot wound.
- D. Los Angeles Riots - 29APR through 27MAY1992:
1. Disturbances resulted in sixty-three deaths, > two thousand, three hundred persons (2,383) injured and > twelve thousand persons arrested.
 2. State (California Army National Guard) and Federal (Army and Marine Corps) personnel deployed to render assistance to civil authorities.
 - a. Officers from the CHP and the LAPD pursued a driver along the Foothill Fwy in Los Angeles, finally stopping the vehicle in the Lake View Terrace neighborhood of Los Angeles.
 - b. The confrontation with Rodney King, and two other passengers led to excessive force by the officers in contact.
 3. Following the acquittal of four LAPD officers, thousands of frustrated residents targeted several Los Angeles neighborhoods by using an extremely destructive fight or flight response.
 4. SCP, having property at 1256 West 29th Street, near the University of Southern California, acted as a vigilante when offenders set buildings ablaze on Vermont Ave. about a 5-minute walk from the apartment complex.
 5. SCP did not trust the authorities, focusing on fellow graduate of JHFPHS, former police officer and then Mayor, Tom Bradley, to secure LA neighborhoods.
 - a. Seen on a roof, SCP carried a weapon and donned a flak jacket, to “patrol” an apartment complex, as indicated by a business associate.
 - 1.) An ethnic specific group of proprietors, POAEMI - Korean descent, had also encouraged self-defense when they used weapons to protect themselves and their stores.
 - 2.) SCP also carried a pistol in a fanny pack when he lived in Mesquite, Texas.
 - b. When SCP attended JHFPHS, he initiated his own rules on certain classroom projects, for fear that his material would get broken or destroyed.
- E. Michele Yvette "Missy" Avila murder - 02OCT1985:
1. A human female less than eighteen years of age, lived in the community of Arleta, Los Angeles CA.
 2. She attended San Fernando High School. Her social relationships with other females developed into a peer rivalry instigated by open jealousy and physical force. It led to her murder committed by two female “friends”.
 - a. One assailant had known Avila for close to nine years
 3. They forced Avila’s head under water, drowning her, and then put a cut tree log weighing 100-pounds over her back.
 - a. After their arrests, trial and convictions for second degree murder, each received extended prison sentences.
 4. Irene Avila, Ms. Avila’s mother, continued to assert her control over her daughter’s legacy.
 - a. Irene Avila shares a first name with SCP’s mother, Irene C. Hudson.

5. The film *A Killer Among Friends*, built on the Avila murder and released in 1992, starred Patty Duke.
- F. Kent State Shootings - 04MAY1970
1. Student demonstrators, in opposition to the escalating war in Southeast Asia, encountered Ohio National Guardsmen on the campus of Kent State.
 2. Guardsmen fired shots into the crowd of students and onlookers killing four (4) and injuring nine (9) others.
 3. One result of the incident, in the failure to employ effective crowd control, led to the closure of hundreds of educational facilities throughout the United States.
- G. Manson Family Crime Spree - JUL/AUG1969 (extended):
1. Charles Manson and members of his organization began their criminal spin after plunking down at an expended movie location, the Spahn Ranch, in the Chatsworth foothills in Los Angeles.
 - a. Shooting a mercenary after rescinding on a prohibited pharmaceutical sale, stealing his money and then claiming this act would start an inter-ethnic war – 01JUL
 - b. Killing Gary Hinman for supplying weakened illegal pharmaceuticals to a combination of individuals who sustain travel using motorcycles: the “Satan’s Slaves”, the “Straight Satans”, and the “Hell’s Angels” - 25JUL
 - 1.) Continuing the use of the “S” word “slave” as a captured archetype in operant conditioning, although by reinforcement, sublimating a reference to East European Slavs.
 - c. Sharon Tate, pregnant, and four others in a ritualistic murder in order to fulfill their deepening imaginings of psychopathic materialism - 08/09AUG
 - d. Leno and Rosemary LaBianca in a ritualistic murder in order to fulfill their deepening imaginings of psychopathic materialism - 10AUG
 - e. Police had arrested thirty-three (33) people, including Manson, but released due to an error in the warrant - 16AUG
 - 1.) At the time of the arrest, safety officers did not connect them to any recent homicides.
 - 2.) The police considered them persons of interest belonging to an organized motor vehicle theft ring named
 - f. Donald Shea tortured and killed due to his opposition to Manson Family activities on the Spahn Ranch and his heterosocial relationship with a POEAMI, his wife - 26AUG
 - g. Police arrest twenty-seven (27) people in a Death Valley haven, including Manson - 10/12OCT
 2. Post-Manson Arrest
 - a. James T. Willett, a former Marine Corps combat veteran, who had duty in Vietnam, and his wife Lauren, killed to prevent them from providing evidence of robberies in Los Angeles – circa SEP72
 - 1.) The police arrested six, three of the six arrested had prior convictions and associated with a prison group, the aryan brotherhood.
 3. Conviction of members of the “Manson Family” having committed eleven murders
 - a. On 25JAN1971, Charles Manson et al received guilty verdicts following a trial in Los Angeles Superior Court.
- H. Hawthorne Nevada Airlines Flight 708 - 18FEB1969:

1. The flight of the "gambler's special", originated at the Hawthorne Industrial Airport in Nevada (HTH) on 18FEB1969.
 - a. A non-scheduled flight, with a flight plan to the Hollywood-Burbank Airport, in the San Fernando Valley, California (BUR/KBUR), the plane would crash into Mt. Whitney, killing thirty-five (35), counting three (3) crewmembers and thirty-two (32) passengers.
 - b. SCP owned a rental property at 12906 Doty Ave. Hawthorne, CA. near the Hawthorne Municipal Airport.
 - 1.) SCP had easy access to the airport using S. Prairie Ave and W. 120th St.
- I. Assassinations of national leaders: 1963-1968:
 1. President John F. Kennedy (1), Dr. Martin L. King (2) and Senator Robert F. Kennedy (3)
 2. Killed by individuals firing rifles, after building a position above the target. (1 and 2)
 3. Killed by an individual using a hand weapon, from ambush, in hiding. (3)
 - a. The day of the blitz attack on Senator R. Kennedy, Sirhan had practiced firing his .22 caliber revolver at the extinct San Gabriel Valley Gun Club, in Duarte, CA.

XXII. Environment 2 – Human: International - Confrontations ending in a single or mass casualty incident

- A. Key conflicts since 2011 – present
 1. Myanmar's persecution of Muslim Rohingya, in 2013, considered by the United Nations as the worst internal struggle of a minority against forced displacement and ethnic cleansing under Tatmadaw security groups.
 - a. Mandalay, an important cultural, commercial, and tourist complex in Myanmar, continues as the last royal capital.
 - b. During 2017, commercial news media coverage, on-air and in paper form, of the situation in Myanmar remained available.
 2. Islamic State of Iraq and al-Sham, identified as a terrorist organization in 2013, having transitioned from its beginnings in 1999, in Jordan.
 3. Syrian Civil War
- B. Early 21st century: Coalition intervention in Afghanistan and Iraq
 1. United States led counter strike and insertion of ground forces against al-Qaeda and Taliban support groups in Afghanistan and proximity zones in 2001 in the aftermath of 11SEP2001 strikes against targets in the United States.
 2. United States led disruption of Saddam Hussein's government and insertion of military forces against Iraqi forces and proximity zones in 2003, developed from conditions in the aftermath of 11SEP2001 strikes against targets in the United States.
- C. Late 20th Century: Soviet-Afghanistan, Iraq-Iran, Iraq-Kuwait, Gulf War, Rwandan Civil War, Civil Wars in Central American
 1. Iran-Israeli-Contra Affair involved the movement of monetary payments and weapons from one region of conflict, in SW Asia, to another region, in Central America.
 2. Key conflicts in Asia while SCP attended high school thru college from 1967-77: Arab-Israeli, Bangladesh, Vietnam-Cambodia -Laos

- a. Two military fatalities in Vietnam have a home and state listing from Sun Valley, CA: in JUN1967 and in FEB1968.
 - b. One fatality included a Soldier who had graduated from John H. Francis Polytechnic High School.
- D. Aircraft Piracy: Seizing or exercising control of an aircraft by force
1. Al-Qaeda's destruction of four airliners into populated targets in the United States on 11SEP2001
 - a. Two airliners departed from Logan Airport in Boston, MA., one departed from Dulles Airport in Washington, D.C. and one departed from Newark International Airport in New Jersey.
 - b. Al-Qaeda operatives controlled three of the flights, forcing two jets into the World Trade Center and one into the Pentagon.
 - 1.) One airliner, after passengers fought for control of the aircraft, crashed near Stonycreek Township, Shanksville, Pennsylvania.
 2. Black September – Destruction of three airliners in Jordan
 - a. Action potentials extending from the 1967 Arab-Israeli conflict, by SEP1970, three years of sporadic violence decreases.
 - b. Within this framework, fedayeen combatants, from the Palestine Liberation Organization (PLO) and its various members, continued to attack Israel.
 - c. To demonstrate its revolutionary zeal, fedayeen agents in the Popular Front for the Liberation of Palestine (PFLP) attempt to hijack five international flights.
 - d. Four had flight plans to New York City, and one flight had London as its destination.
 - 1.) Passengers on one flight successfully avoided a hijacking.
 - e. Three airliners landed at Dawson airfield in Jordan.
 - f. After releasing a majority of the passengers, on 12SEP1970, PFLP forces destroyed three airliners, influencing an attentive world audience.
 - 1.) When western governments released seven PFLP members from prison, the group released the remaining passengers.
 - g. An over confident PLO eventually threatened the existence of the Hashemite throne and its leader, Hussein bin Talal.
 - 1.) On 16SEPT1970, Jordanian forces deployed to PLO controlled areas, executing attacks to contain their forces and prevent future planning.
 - h. On 11SEP1970, President Richard M. Nixon issued a directive, ordering:
 - 1.) training and placement of armed personnel on U.S. flag carriers
 - 2.) testing electronic surveillance techniques
 - 3.) improving tactics to detect weapons and explosives.
 3. Pacific Air Lines Flight 773 07MAY1964: The first mass murder-suicide aboard an airplane
 - a. Francisco Paula Gonzales, a former Olympian who represented the Philippines, moved to San Francisco, with his family, after participating in the Rome Games.
 - b. He knew that he could not solve his marital and financial problems and no longer repressed his anxiety.
 - c. He purchased a \$105,000 life insurance policy to his wife and a firearm.
 - d. During his round-trip flight from San Francisco, CA to Reno, NV, where he spent his time gambling, he told friends his self-imposed punishment scheme - to commit suicide.

- e. The pilot and co-pilot died inside the cockpit from gunshot wounds and the assailant managed a self-inflicted wound.
 - 1.) The twin engine turboprop Fairchild F-27 crashed at 6:49 a.m. near Danville, California.
 - 2.) A total of forty-four (44) persons died in the incident.

XXIII.Environment 3 - Natural: A geological event ending in a single or mass casualty incident

- A. Hurricane Irma, 30AUG-12SEP2017: Offshore, Irma registered as a category 5 hurricane, caused > seventy (70) fatalities and forced > six million persons to evacuate.
 - 1. SCP lived in a retirement community in Melbourne, FL. for approximately two years.
 - 2. SCP's mother lived in Orlando, FL near the home of his brother, Eric Paddock.
 - a. SCP called to check on his mother's safety due to the storm's intensity.
 - 3. Her home located in an area that had electrical failure, for just hours to more than a week, but no damage from wind, falling trees or flooding.
- B. Northridge Earthquake, 17JAN1994: A magnitude 6.5 quake struck the San Fernando Valley, with its epicenter in the city of Reseda at mid-morning, 4:30 A.M. PST. This event listed > fifty-seven (57) fatalities and > eight thousand seven-hundred (8,700) injured.
 - 1. California State University Northridge, suffered > \$350 million dollars in damage, closing the Oviatt Library
- C. Sylmar-San Fernando Valley Earthquake, 09FEB1971: A magnitude 6.7 quake struck the San Fernando Valley at mid-morning, 6.01 A.M. PST
 - 1. The Veterans Administration Hospital had twenty-six (26) buildings built before 1933, situated as close as three (3) miles to the rupture.
 - 2. Without seismic-resistant designs, forty-nine (49) persons suffered loss of life.
 - a. Newly constructed and designed buildings did not collapse.

Part 9 - Medical

XXIV.Medical – individual's observation reports, treatment plan, prescriptive medications, hospitalization signaling onset

- A. Reports from persons, who had temporary business contacts with SCP, indicate that they perceived him as a narcissist.
 - 1. Persons have also said that SCP humiliated MD in public several times.
 - 2. Prostitutes explained that their client, SCP, needed to imitate acts of sadomasochism during inter-racial relations.
 - a. SCP told of his despair and unhappiness, originating from his father's genetic makeup, during one of his encounters with a prostitution service.
 - b. This fact indicates the strength of SCP's excitatory tendency per repetition with other paid substitutes.
- B. SCP had lost a large amount of money, since 2015, more to his gambling addiction, than to his spending of nearly \$100,000 dollars on weapons.
 - 1. SCP also drank often when visiting casinos and bars.

- C. MD explained that she observed SCP's interest in the location of the Las Vegas Village when they had stayed in the Mandalay Bay Hotel and Resort in early SEP2019.
 - 1. He expressed interest by the manner he observed objects below and distant from the hotel's window, while pacing near the glass.
- D. SCP had received a prescription, for anxiety in JUN2017, that, if used irresponsibly, would lead to aggressive behavior.
 - 1. Persons who spoke with SCP listened to his complaints of feeling ill, pain and fatigue.
 - a. MD did state that SCP screamed aloud while lying in bed.
 - 2. His primary care physician considered SCP as a person showing signs of neurocognitive disorder.
 - a. SCP had a difficulty receiving medications, refusing anti-depressants.
 - 3. The Nevada Prescription Monitoring Program indicates that SCP received a prescription on 21JUN2019.
 - a. Henderson physician Dr. Steven Winkler prescribed 50 10-milligram diazepam tablets to SCP.
 - b. Paddock purchased Valium, prescribed for 2qd.
 - c. The irregular use of his prescripts can lead to dyscontrol and physical aggression toward people and property.
- E. SCP made decisions to attack non-combatants formed on his neurocognitive disorder prompting co-occurring mental health conditions.
 - 1. SCP intentionally ended his relationship with MD, removing any inhibitory regulation of his behaviors, emotions, and thoughts (BETs).
 - a. Compounded his loss of continuity in subjective experiences.
 - 2. Declined into a manic stage believing his reality extended from alternative perceptions.
 - a. Continued his dyscontrol with bipolar symptoms
 - b. Distinguished a unique craving for constant travel, hotel bookings, Internet activity
 - c. Decrease need for sleep and sustained a dream-motif for speed.
 - 3. SCP's gambling disorder, coupled with his preoccupation with firearms, presented an individual having intense anxiety in a fear-based, melancholy context – he could always lose.
 - 4. The momentum of SCP's psychotic projections assembled persecutory delusions.
 - a. Suicided individuals previously manifest specific symptoms
 - 1.) externalizing their feelings of anger, pain and aggression onto others
 - 2.) justifying a violation of the rights of others
 - 3.) targeting others as a form of self-defense.
 - b. The imagined presence of a transgressor remained coupled within SCP's own mind, presenting a self-object relationship, or hallucination.
 - 1.) SCP's wanderings influenced and reestablished deposits of past interactions, following exposure during synthesis iteration.
 - a.) SCP's digital footprint listed the Mob Museum, (National Museum of Organized Crime and Law Enforcement) from the Internet, located at 300 E Stewart Ave. Las Vegas, NV 89101.

- i.) This fact illustrated his planning and need for remembrance and confidence.
 - b.) The Mob Museum, once the Las Vegas Post Office and Courthouse, operated as a legal institution until 1965 and as a post office until 2005.
 - i.) Following restoration, it holds the Mob Museum's exhibits.
 - ii.) An obvious reminder that he, as well as his mother, had employment with the U.S. Postal Service.
 - iii.) The fact that a Most Wanted poster often get placed in a post office.
- F. Post-mortem examination to find extirpation or destruction in part of the of the cortex
 - 1. An inquiry began as to whether SCP's functionality proved that he evidenced a deviation from higher activities due to scarring or injury to his brain.
 - 2. Clark County coroner and other selected medical professionals noted an array of material in the hippocampus named corpora amylacea, tiny masses consistent to neurodegenerative disease.
 - a. The development of these bodies can prove possible relationship to blood-brain exchange in persons advanced in age, proving deteriorated and accumulated neuronal cells.

© R C A
###